

LEGEND/ABBREVIATIONS:

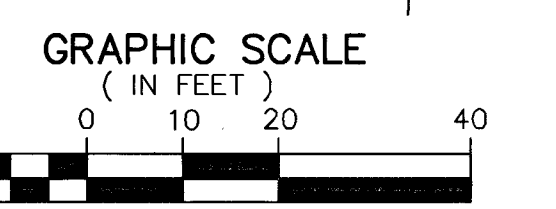
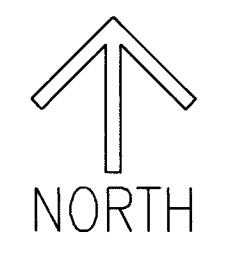
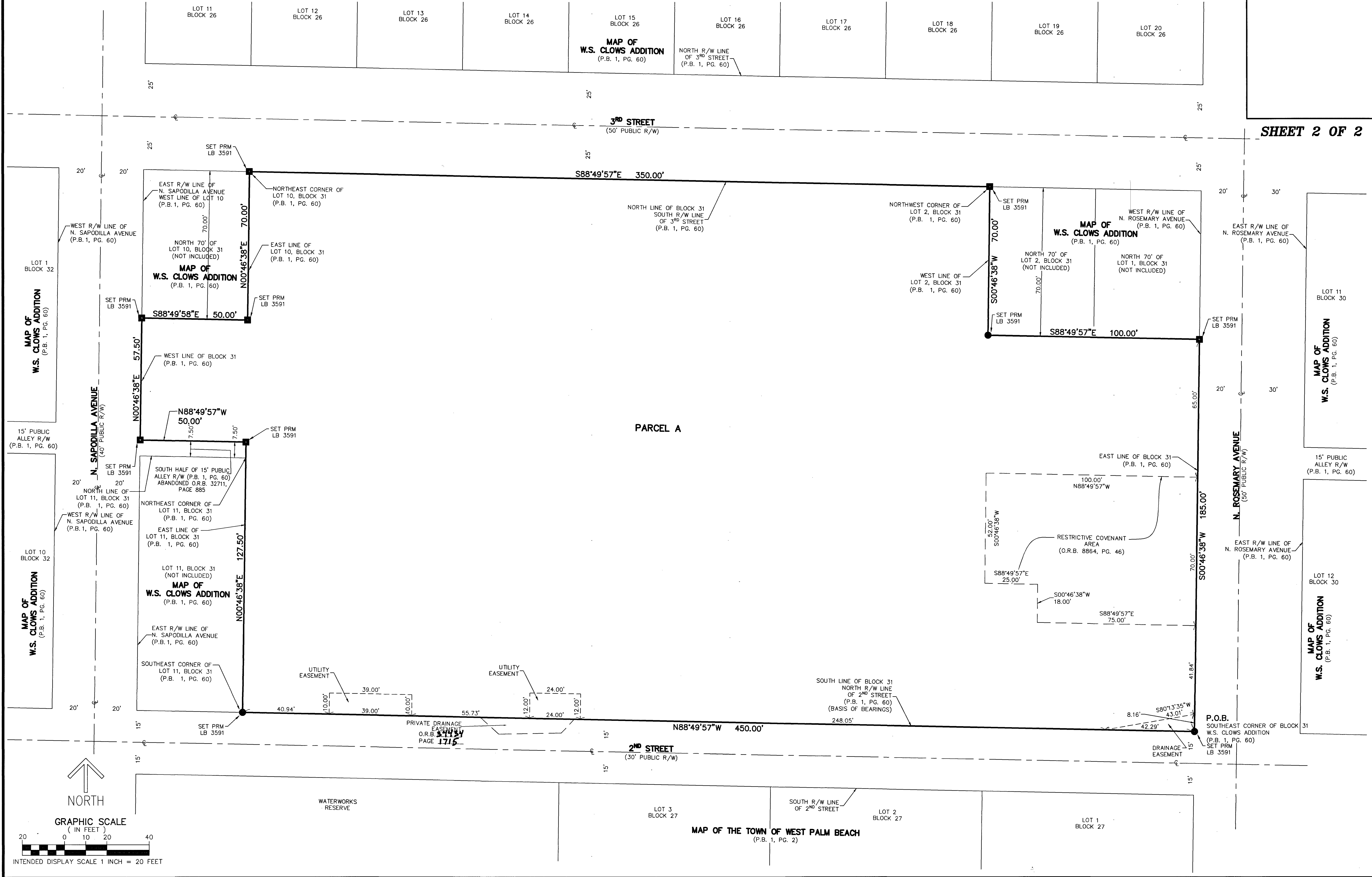
- LB - LICENSED BUSINESS
- O.R.B. - OFFICIAL RECORDS BOOK
- P.B. - PLAT BOOK
- PG - PAGE
- P.O.B. - POINT OF BEGINNING
- P.L.S. - PROFESSIONAL LAND SURVEYOR
- P.S.M. - PROFESSIONAL SURVEYOR & MAPPER
- R/W - RIGHT-OF-WAY
- C - CENTERLINE
- PRM - INDICATES SET PERMANENT REFERENCE MONUMENT, 4"x4" CONCRETE WITH ALUMINUM DISC STAMPED "PRM C&W LB3591"
- PRM - INDICATES SET PERMANENT REFERENCE MONUMENT, NAIL WITH DISC, STAMPED "PRM C&W LB3591", UNLESS NOTED OTHERWISE.

GRAND PLAT

BEING A REPLAT OF A PORTION OF BLOCK 31, MAP OF W.S. CLOWS ADDITION, AS RECORDED IN PLAT BOOK 1, PAGE 60 OF THE PUBLIC RECORDS OF PALM BEACH COUNTY, FLORIDA, TOGETHER WITH A PORTION OF THAT 15-FOOT WIDE ALLEY RIGHT-OF-WAY SITUATED BETWEEN LOTS 1 THROUGH 10, SAID BLOCK 31 AND LOTS 11 THROUGH 20, SAID BLOCK 31, LYING IN SECTION 21, TOWNSHIP 43 SOUTH, RANGE 43 EAST, CITY OF WEST PALM BEACH, PALM BEACH COUNTY, FLORIDA.

THIS INSTRUMENT PREPARED BY
 DAVID P. LINDLEY
 OF
CAULFIELD & WHEELER, INC.
 SURVEYORS - ENGINEERS - PLANNERS
 7900 GLADES ROAD, SUITE 100
 BOCA RATON, FLORIDA 33434 - (561)392-1991
 CERTIFICATE OF AUTHORIZATION NO. LB3591

SHEET 2 OF 2



INTENDED DISPLAY SCALE 1 INCH = 20 FEET